



**HOLLOWCORE PH
ERECTORS OPC**



BUILDING DREAMS

REINFORCING REALITIES



Table Of Content

About Us	02
What is HollowCore Prestressed Concrete?	05-06
Products & Details	07-08
Our Services	09-10
Hollowcore Installation Process	11-12
Notable Projects	13-18



About Us

Hollow Core PH Erectors OPC is a legally established corporation in the Philippines, specialized in manufacturing PRE-STRESSED CONCRETE for HOLLOW CORE SLABS, WALLS, and COLUMNS. Our expertise ensures top-quality workmanship, employing Steel Cables/tendons at a tensile strength of 1770 Mpa or higher before pouring concrete with specified Mixtures of 4000 psi and above. This Hollowcore Prestressed technique prevents concrete deflection and cracking.



HOLLOWCORE PH
ERECTORS OPC

About Us



Our Vision

Our vision is to be a leading construction company that specializes in using hollow core systems to create buildings that are efficient, cost-effective, and environmentally friendly. We strive to be a company that our clients can trust to deliver high-quality workmanship and exceptional service. We aim to continuously improve our processes and technologies to stay at the forefront of the industry and provide innovative solutions that meet the evolving needs of our clients.



Our Mission

Our mission is to provide high-quality, efficient, and sustainable construction services that utilize the latest technology and expertise in the industry. We aim to lessen the use of traditional concreting, which entails long duration of work and high labor costs, formworks, steelworks, and other unnecessary expenses to finish the construction. Our use of hollowcore systems allows us to streamline the construction process and provide cost-effective solutions to our clients without compromising on quality or safety.





What is Hollowcore Pre-stressed Concrete?

Hollowcore Prestressed Concrete entails the implementation of pre-tensioned steelcables/tendons, drawn to a maximum of 1770mph, prior to the concrete pouring process, utilizing mixtures with a strength of 4000 psi (or 8000 psi following a 28-day curing period).

The incorporation of Hollowcore Prestressed Concrete is of paramount significance to mitigate concrete deflection and cracking, given the inherent strength dichotomy of concrete, exhibiting robustness in compression but vulnerability in tension.

Traditional Construction Method



Employing traditional construction methods entails substantial effort in constructing walls and slabs, involving tasks such as erecting scaffoldings and pouring concrete before attaining the final slab structure. Additionally, a considerable labor force is essential to successfully execute these processes.



Hollowcore Prestressed Concrete

Employing traditional construction methods entails substantial effort in constructing walls and slabs, involving tasks such as erecting scaffolding and pouring concrete before attaining the final slab structure. Additionally, a considerable labor force is essential to successfully execute these processes.



Product & Details



Hollowcore Prestressed Concrete Walls

Size: 80-85mm x 500mm x 3000mm variable length.
Strength: 4000 psi to 8000 psi
After 28 days of curing

We use high tensile steel tendons with 1670 mpa tensile strength.
Ready to paint - just apply skimcoat will suffice.

Easy-Install; requiring just 1-2 tons of chain block to lift the panels. To ensure a secure fit and prevent any leaks at the joints, concrete epoxy is applied to bond the two panels together using their tongue and groove design.

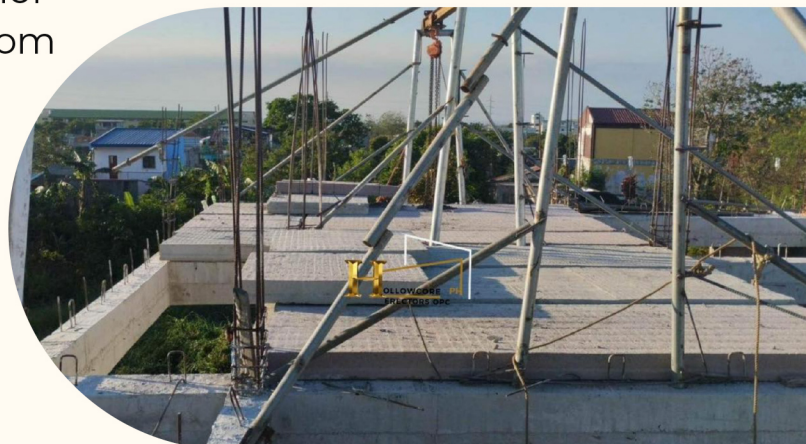
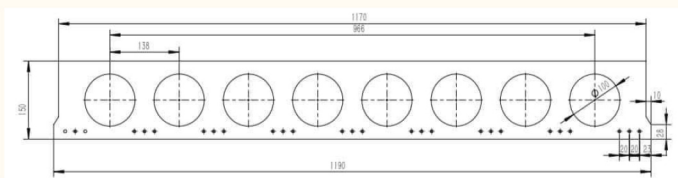
Hollowcore Slabs

Size: 150mm x 1200mm x 500mm
of up to a maximum
of 6000mm depending on load.

Strength:
4000 psi mixtures upon pouring
and 8000 psi after 28 days of

We are using high tensile steel tendons with a maximum 1770 mpa tensile strength. Area of steel depends on the specified length of span and loading requirements.

Easy to install - only 3-5 tonner chain block to lift the panels and hold the hollowcore slabs in place. Or using a boom truck will be much easier.



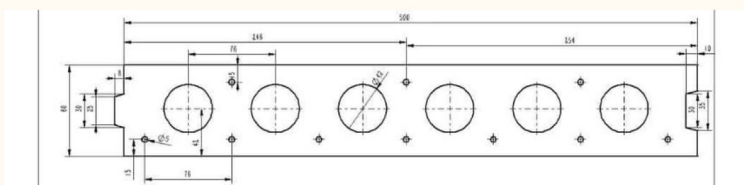
Hollowcore Walls

Size: 80mm x 500mm x 3000mm variable length.
50mm x 500mm x 2000mm

Strength: 4000 psi to 8000 psi
After 28 days of curing

We use high tensile steel tendons with 1670 mpa tensile strength.
Ready to paint - just apply skim cast will suffice.

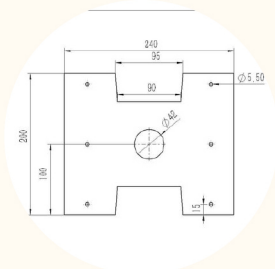
Easy to install - only 1-2 tons of chain block to lift the panels will be enough,
tongue and groove to make hold of two panels.



Hollowcore Fences

Size: 88mm x 500mm x 3000mm variable length

Stackable by the casted tongue and groove shape.



Hollowcore Columns

Size: 200mm x 240mm x 3000mm variable height
Grooved in two sides to accommodate and adapt other fences and walls.

Our Services



Design and Engineering

Strategically formulating efficient and cost-effective designs that ensure the creation of a globally competitive structure.



Renovations & Retrofits

We prioritize sustainable hollowcore renovations and retrofits, aiming to improve structural performance and create eco-friendly spaces in alignment with sustainable development goals.

Manufacturing of HollowCore Products

We provide innovative HollowCore systems for optimized construction solutions. Our offerings prioritize efficiency, performance, and uncompromising quality.



Construction of Residentials, Commercial, and Industrial Buildings

With a certified construction process, we efficiently build with HollowCore systems.

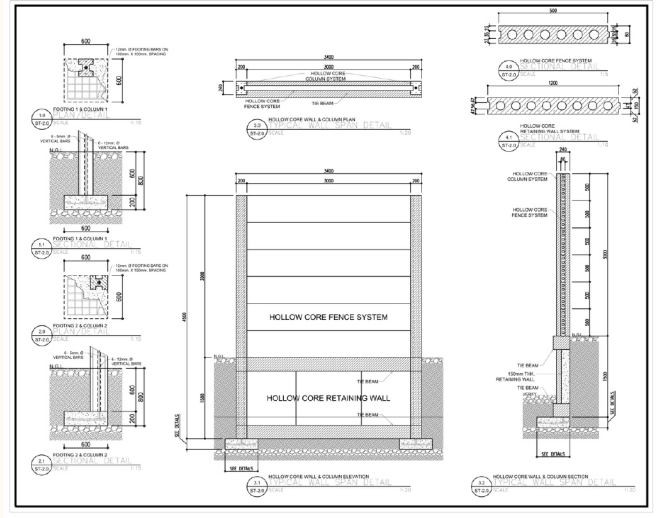




Hollowcore Installation Process

Planning

The planning stage for hollowcore products in construction involves designing, manufacturing, and coordinating logistics to efficiently use precast, prestressed concrete panels. It includes assessing requirements, selecting materials, implementing safety measures, and creating a



GENERAL NOTES

1. ALL DIMENSIONS SHALL BE IN ACCORDANCE WITH THE CONTRACT DOCUMENTS UNLESS OTHERWISE SPECIFIED.
2. ALL DIMENSIONS SHALL BE IN ACCORDANCE WITH THE CONTRACT DOCUMENTS UNLESS OTHERWISE SPECIFIED.
3. THE CONTRACTOR SHALL BE RESPONSIBLE FOR OBTAINING ALL NECESSARY PERMITS AND APPROVALS FROM THE APPROPRIATE AUTHORITIES.
4. THE CONTRACTOR SHALL BE RESPONSIBLE FOR OBTAINING ALL NECESSARY PERMITS AND APPROVALS FROM THE APPROPRIATE AUTHORITIES.

SHEET CONTENTS

PROJECT TITLE: HOLLOWCORE FENCE SYSTEM RETAINING WALL

PREPARED BY: HOLLOWCORE ERECTORS

DATE: 17/07/2024

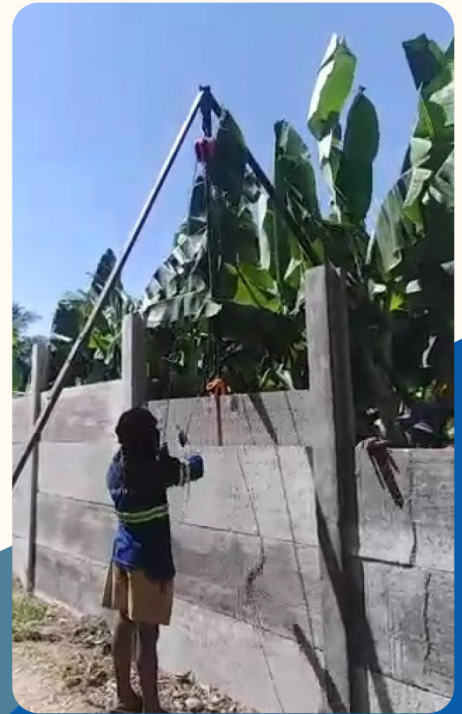


Delivery

Careful logistics planning ensures the efficient transport of precast, prestressed concrete panels from the manufacturing site to the construction site during the delivery stage of hollowcore products in construction.

Installation

Skilled workers, utilizing equipment such as chain blocks, power tools, and heavy machineries, strategically position and secure the precast, prestressed concrete panels on-site. They follow precise engineering and design specifications to ensure structural integrity and optimal performance in the building project.





Notable Projects



Project Location: Amadeo, Cavite

Hollowcore Concrete Walls Size:
80mm x 500mm x 3000mm

Hollowcore Columns Size:
200mm x 240mm x 3300mm



Project Location: Dasol, Pangasinan

Hollowcore Slabs Size:
150mm x 1200mm x 5000mm

Hollowcore Columns Size:
200mm x 240mm x 3300mm

Hollowcore Pedestal Walls Size:
80mm x 500mm x 1200mm



Project Location:
Padre Garcia, Batangas

Hollowcore Perimeter Fence
Size: 80mm x 500mm x
3000mm

Hollowcore Columns Size:
200mm x 2400mm

Area: 3.5 Hectares



Project Location:
Baras, Rizal

Hollowcore Concrete Walls Size:
80mm x 500mm x 3000mm

Hollowcore Columns Size:
200mm x 240mm x 3300mm

Area: 2.6 Hectares



Project Location:
Bellfast, Fairview QC

2nd and 3rd floor walls

Hollowcore Concrete Walls Size:
125mm x 1200mm x Variable
height up to 5000mm



Project Location:
Teresa, Rizal

Perimeter Fence Size:
50mm x 500mm x 2000mm

Lot Size: 2 Hectares



Project Location:
Tanay, Rizal

Perimeter Fence

Lot Size: 15 Hectares

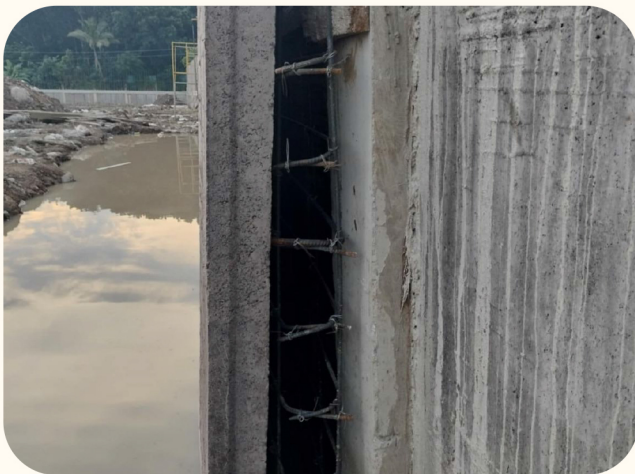


Project Location:
Taguig City

Retaining Wall
Lot Size: 1,000 Square meter

Project Location:
Pagbilao, Quezon

Retaining Wall | Area: 1 Hectare





Project Location:
Mindanao Avenue

Elevator Walls | 1st Floor
to 10th Floor



Project Location:
Taytay, Rizal

Project: Warehouse
Slabs 2nd Floor



Project Location:
San Mateo, Rizal

Project: Prayer House
Slabs 2nd Floor



For large-scale properties like these, Prestressed concrete is needed for your perimeter fence.;

Advantages:

- Easy to install.
- No more handling of bulk cement sand and gravel on site.
- 4000 PSI Prestressed concrete - gives you stronger walls and columns.
- Lesser labor cost, especially the handling cost of delivered materials.
- Only the foundation requires a minimal amount of cement, sand, gravel, and deformed bars, which are readily available in your local hardware.

HH OLLOWCORE PH ERECTORS OPC

#31 Lakandula St., S.W. Corner Ipil St.,
Marikina Heights, Marikina City.



(+632) 885-716-296



(+63) 915-514-6189 / (+63) 969-350-6060



hollowcore.ph@gmail.com



Hollowcore PH



hollowcorehomes.com

